

1/1





[Activate Account](#)

[All Listings](#)

[Overview](#)

[Property Details](#)

[Schools](#)



You have 1 new notifications.

[See More](#)

Subdivision: North Beach

Status: Active

Additional Property Type: Unimproved Land

Property Details



Exterior Details

Property Type	Land
Lot Size Area	19,166.00 sqft
Lot Size Dimensions	199x99
Lot Features	Corner Lot, Level
Road Surface	Paved
Topography	Level
View	Territorial

Land Details



Utilities

Water Source	Not Connected (nearby)
Utilities	Electricity Available, Natural Gas Not Available, Sewer Available, Water Available



[See More](#)

Other Facts & Features

Other Facts & Features

List Price	\$375,000
Directions	49th Street to Landes to the corner of Landes and 55th and 56th.
Listing Terms	Cash, Conventional
Zoning Details	Residential
Possession	Closing
Restrictions	No Restrictions
Listing Brokerage	Coldwell Banker Best Homes
Listing Brokerage Email	camden@jrpcllc.com
Listing Brokerage Phone	(360) 385-0836
Offers	Seller intends to review offers upon receipt
Disclosures	Sellers Disclosure Not Available

Legal & Financial Details

Tax ID	936903302
Tax Year	2025
Annual Taxes	\$2,525



[Activate Account](#)

[Overview](#)

[Property Details](#)

[Schools](#)



You have 1 new notifications.

[See More](#)

*The listing broker's offer is made only to participants of the MLS wh

Location

County/Parish

Jefferson

Subdivision

North Beach

MLS Area Major

480 - Port Townsend

Postal City

Port Townsend

Schools

Nearby School Districts

Unified School District

Port Townsend #50

School Ratings

Elementary Schools



Salish Coast Elementary

Public Schools

5/10*

Distance: 1.94 miles

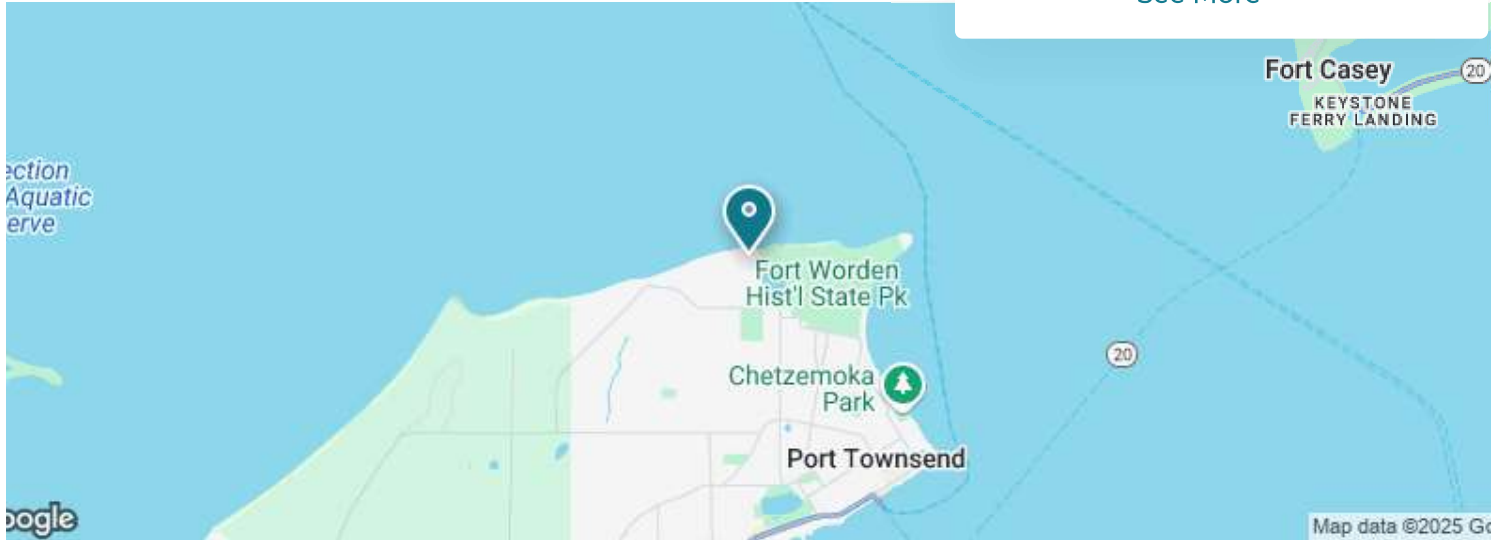
Number of students in 2023: 441

Student/teacher ratio in 2023: 14:1

*School data is provided by LiveBy. School boundaries are a reference only and may change. For information on school enrollment eligibility, contact the school district directly. The school ratings information is copyrighted and provided by GreatSchools.org. Prospective buyers and renters should use



[See More](#)



Calculate travel time



Public Record Data

More information about this property is available from other public sources. Review the information we've found to get a full overview of the property.

[View Public Record Data](#)



[Activate Account](#)

[All Listings](#)

[Overview](#)

[Property Details](#)

[Schools](#)



You have 1 new notifications.

[See More](#)

No upcoming open houses

How do you feel about this listing?

Disliking won't delete it from your saved searches.

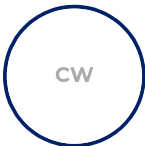


Favorite



Dislike

Talk to your agent Carol Wise about this listing



[Add a Note](#)

[\(360\) 531-1301](#)

carolwise@gmail.com

Getting Around the Neighborhood

Walk

89_{/100}

Most errands can be accomplished on foot

Bike



[See More](#)

Transit

45_{/100}

A few nearby public transportation options

Tax History

Year:	2024
Property Taxes:	\$2,525.39 (+6.8%)
Tax Assessment:	\$260,000
Year:	2023
Property Taxes:	\$2,364.06 (+5.4%)
Tax Assessment:	\$260,000
Year:	2022
Property Taxes:	\$2,243.17
Tax Assessment:	\$260,000

▲ All information on this page is considered reliable, but not guaranteed. Please verify these property details with your agent.



[← All Listings](#)

[Overview](#)

[Property Details](#)

[Schools](#)



You have 1 new notifications.

[See More](#)



Compare Property



Add a Note



View Insights

[← Previous Listing](#)

[Next Listing →](#)

Powered by onehome™

[Terms of Service](#) [Privacy Policy](#) [Help](#)

©2025 OneHome by [CoreLogic](#). All rights reserved.